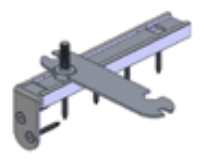
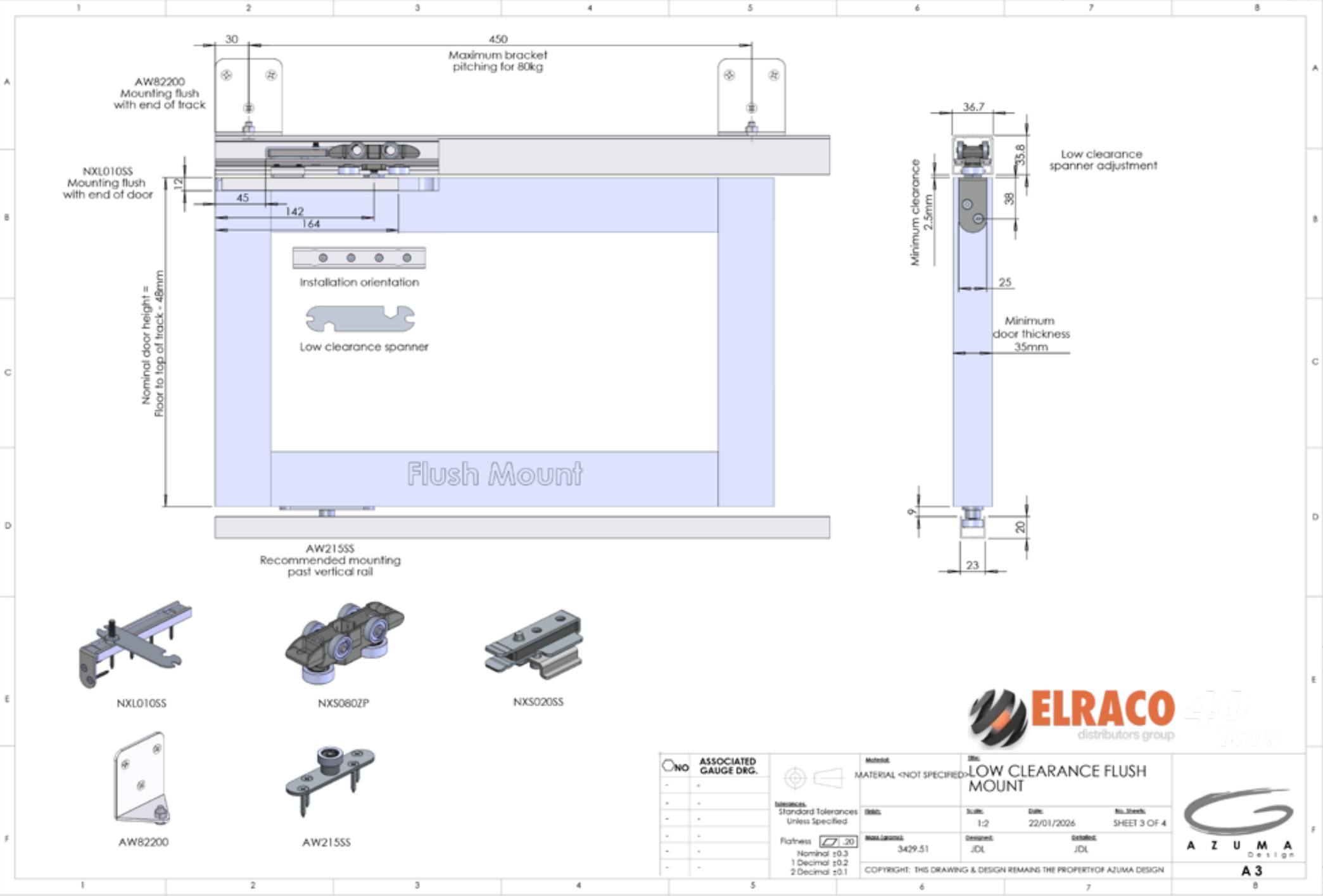
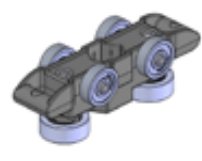


OPTIONAL - LOW CLEARANCE CONFIGURATION



NXL010SS



NXS060ZP



NXS020SS



AW82200

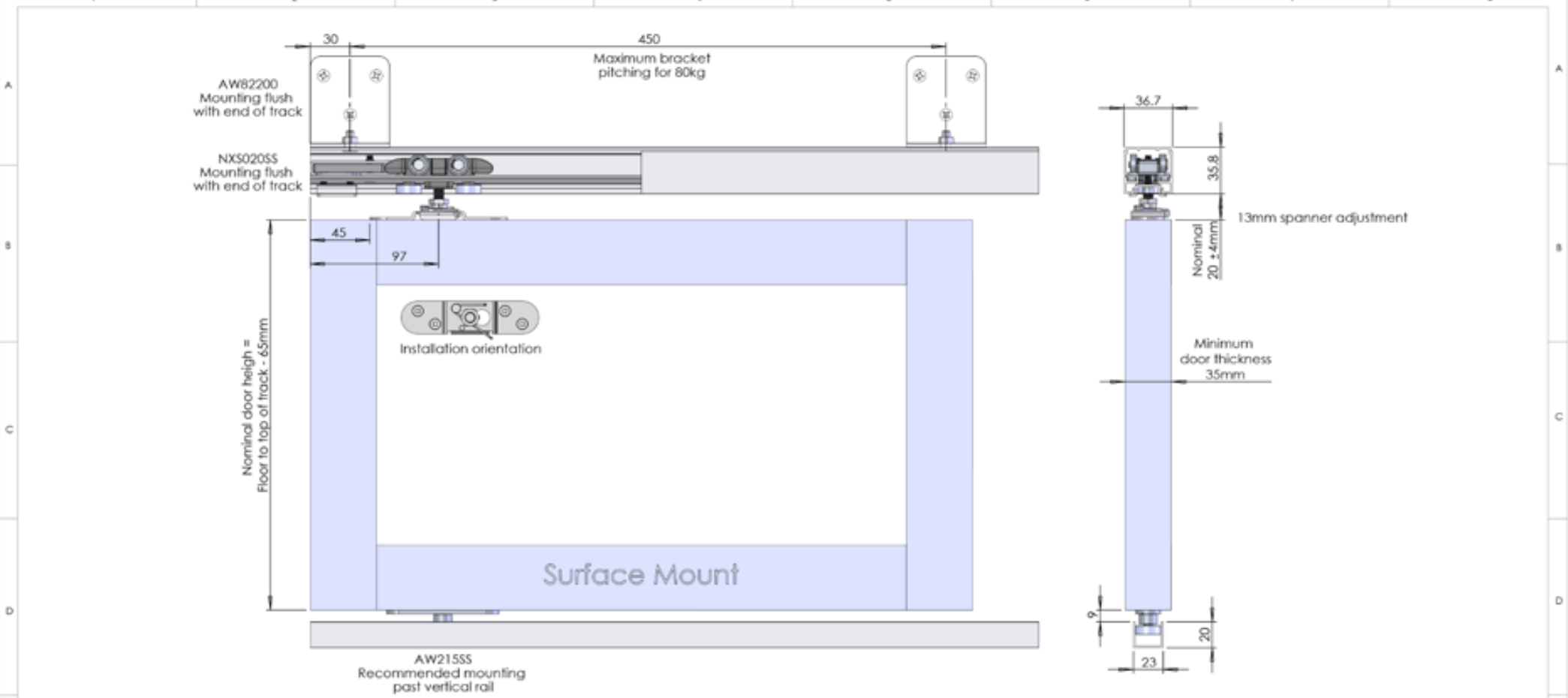


AW215SS



NO ASSOCIATED GAUGE DRG.		Material: MATERIAL <NOT SPECIFIED>		Title: LOW CLEARANCE FLUSH MOUNT		
		Tolerances: Standard Tolerances Unless Specified		Scale: 1:2	Date: 22/01/2026	
		Flatness: 0.20 Nominal ±0.3 1 Decimal ±0.2 2 Decimal ±0.1		No. Sheets: SHEET 3 OF 4		
		Max. Material: 3429.51	Designer: JDL	Checker: JDL	COPYRIGHT: THIS DRAWING & DESIGN REMAINS THE PROPERTY OF AZUMA DESIGN	

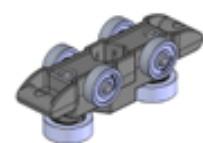
STANDARD CONFIGURATION



NXS081ZP



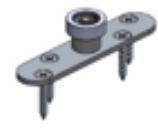
NXS020SS



NXS080ZP



AW82200



AW215SS

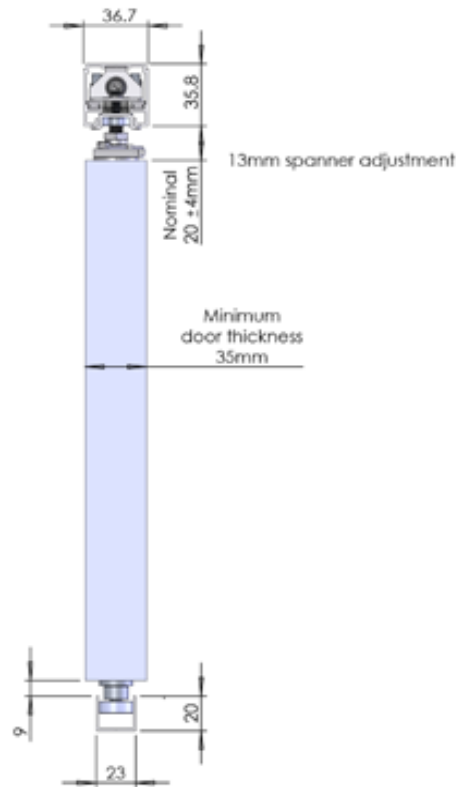
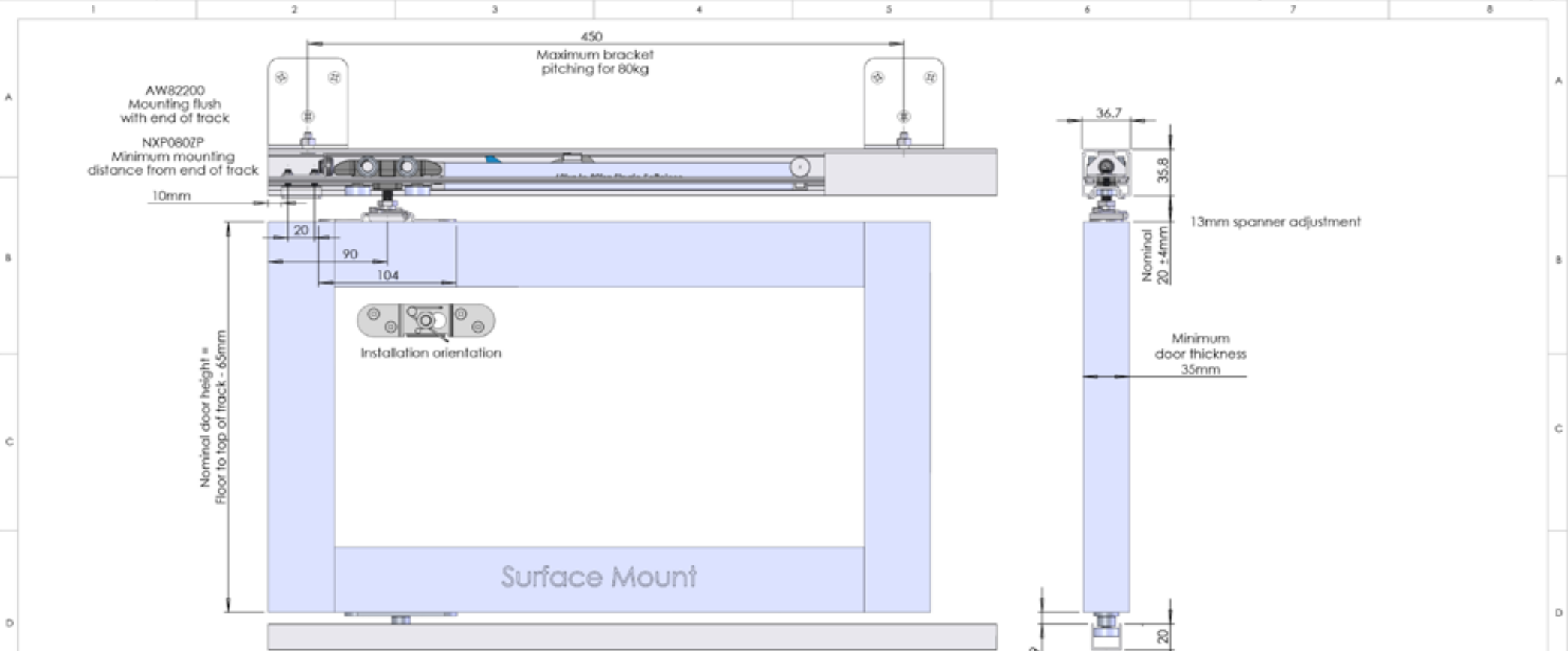


NO	ASSOCIATED GAUGE DRG.	Material	Title		
			MATERIAL <NOT SPECIFIED>	SURFACE MOUNT ENDSTOP	
		Finish	Scale	Date	No. Sheets
			1:2	22/01/2026	SHEET 2 OF 4
		Max. Internal	Designt	Detail	
		3457.21	JDL	JDL	
Tolerances: Standard Tolerances Unless Specified Flatness: $\sqrt{\text{0.20}}$ Nominal ± 0.3 1 Decimal ± 0.2 2 Decimal ± 0.1					
COPYRIGHT: THIS DRAWING & DESIGN REMAINS THE PROPERTY OF AZUMA DESIGN					

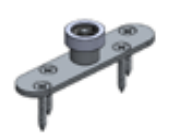
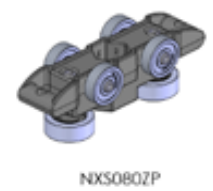
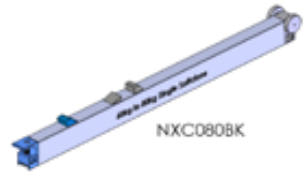
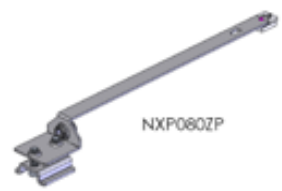


AZUMA Design

OPTIONAL - SOFT CLOSE CONFIGURATION



AW2155S Recommended mounting past vertical rail



NO	ASSOCIATED GAUGE DRG.	Material	Title		
-	-	MATERIAL <NOT SPECIFIED>	SOFTCLOSE		
-	-	Finish	Scale	Date	No. Sheets
-	-	Standard Tolerances Unless Specified	1:2	22/01/2026	SHEET 4 OF 4
-	-	Flatness $\sqrt{0.20}$	Customer	Detailer	
-	-	Nominal ± 0.3	JDL	JDL	
-	-	1 Decimal ± 0.2	COPYRIGHT: THIS DRAWING & DESIGN REMAINS THE PROPERTY OF AZUMA DESIGN		
-	-	2 Decimal ± 0.1	3505.58		

